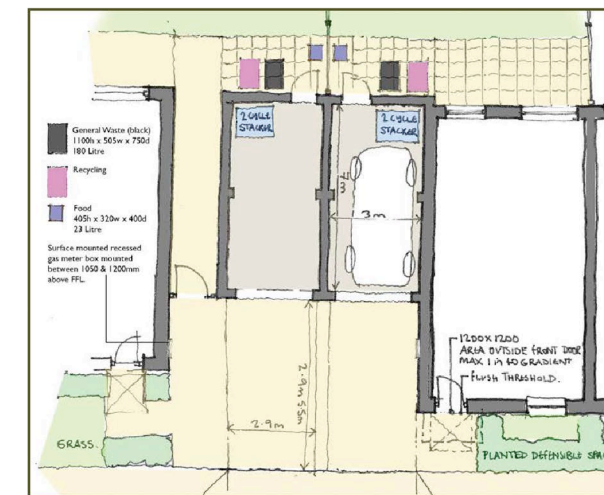




- Form New Wider Access
- Proposed 6m Wide Adoptable Access Road.
- Refuse/Emergency Vehicle Turning
- Refuse
- Recycling
- Proposed Dwellings Parking: 20 spaces
One space for each 1 bed, two spaces for each 2 & 3 bed.
Size: 2.9 x 5.5m.
(One space per dwelling capable of being widened by 300mm)
- Cycle Parking
1 secure space per dwelling
- Carehome Parking 11 spaces
2.5 x 5.0m.
- Carehome Wheelchair Parking 1 space
2.4 x 4.8m + 1200mm zone
- Ramp/ Garden Zone to enable level access at 5.95AOD.



Inset: Parking/Garage/Refuse/Recycling Illustrative Arrangement

